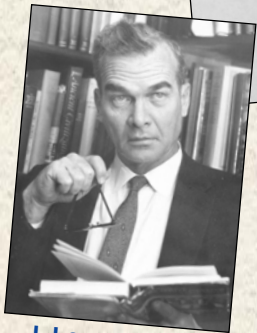


# DWU ARCHIVES AND SPECIAL COLLECTIONS

The McGovern Library at Dakota Wesleyan University houses the **DWU ARCHIVES**, as well as the Sen. George McGovern Collection, the Sen. Francis H. Case Collection, and the Jennewein Western Library and J. Leonard Jennewein Collection.



Francis H. Case



J. Leonard Jennewein

preserve our history

Donate to the **DWU ARCHIVES** and help preserve Wesleyan's rich past. If you have any memorabilia from Dakota Wesleyan, don't throw it away. First contact the DWU archivist to see if it's worth keeping.

## FOR MORE INFO

**Laurie Langland, Archivist**  
McGovern Library, DWU  
1201 McGovern Ave.  
Mitchell, SD 57301

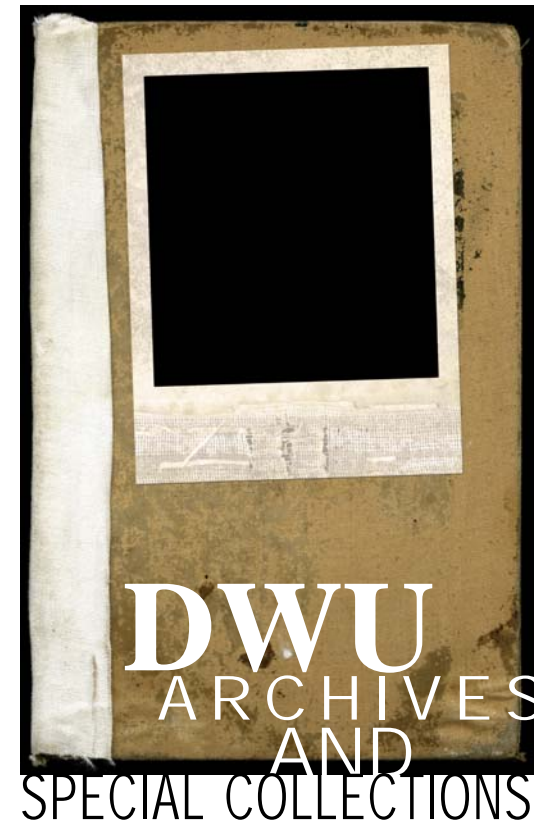
**Phone:** 605-995-2134

**Fax:** 605-995-2893

**E-mail:** lalangla@dwu.edu

*Use of the **DWU Archives**  
and **Special Collections** is  
by appointment only.*

[www.dwu.edu/library](http://www.dwu.edu/library)



preserve our history



**DAKOTA WESLEYAN  
UNIVERSITY**

George and Eleanor McGovern Library and  
Center for Leadership and Public Service

1201 McGovern Ave., Mitchell, SD 57301  
605-995-2134 • [www.mcgoverncenter.com](http://www.mcgoverncenter.com)

LIBRARY, ARCHIVES & SPECIAL COLLECTIONS

# DWU ARCHIVES AND SPECIAL COLLECTIONS

## Preserve DWU's History

The McGovern Library holds much interesting and historically valuable material in the **DWU ARCHIVES**.

Examples of material in the archives include the following:

- *Tumbleweeds*
- *Phreno Cosmians*
- *Prairie Winds*
- *DWU bulletins*
- *Photographs and slides*
- *Programs from special events, including Baccalaureate and Commencement, convocations, musical events, theatrical productions, athletic events, inaugurations and lectures*
- *Catalogs, directories and handbooks*

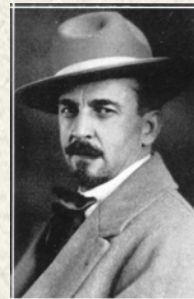


**Tennis Quartette**  
1913 *Tumbleweed*

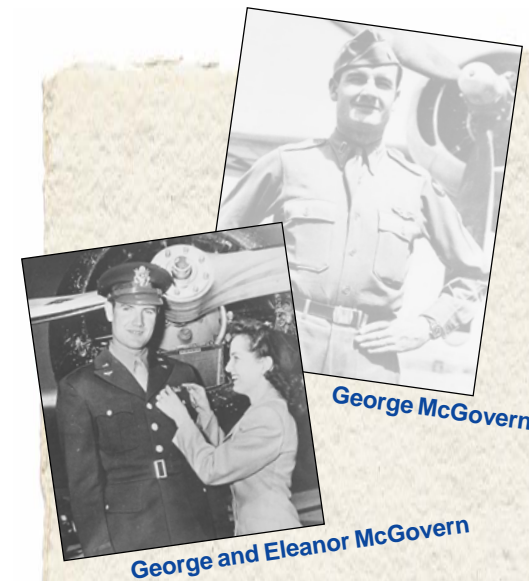
## Materials Needed

There are many gaps in the **DWU ARCHIVES**. Donations of DWU material help fill these gaps and are very much appreciated. Examples of material needed include the following:

- **Commencement and Baccalaureate Programs:** Before 1915, 1920-24, 1940-48, 1953, 1975-89, 1995
- **Tiger Tribune:** 1985 and earlier
- **Phreno Cosmian:** 1974 and earlier
- **Prairie Winds:** 1987 and earlier
- **Alumni Directory:** 1996
- **Written Works by Faculty and Staff**
- **Photographs**
- **University Directories:** 1988 and earlier
- **Student Handbooks**
- **Programs from Special Events** (Music, Theatre, Sports, Inaugurations)
- **DWU Bulletins**
- **Memorabilia**



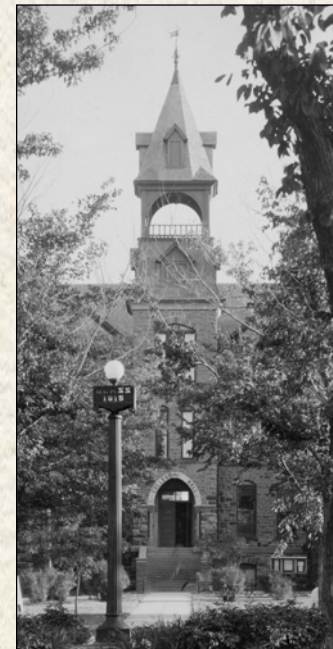
**Badger Clark**



**George McGovern**

**George and Eleanor McGovern**

preserve our history



**College Hall**  
1888-1955  
*Dakota Wesleyan University*