

A Performance by the **Ron and Sheilah Gates Department of Music**



featuring the **Dakota Wesleyan Choir**, the **DWU Alumni Choir**,
the **Highlanders**, **LyricWood Orchestra** and **Wesleyan Bells**

May 3, 2026

7 p.m. • Sherman Center



DAKOTA WESLEYAN

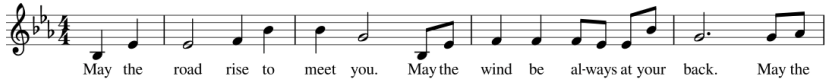
U N I V E R S I T Y

1200 W. University Ave.

Mitchell, SD 57301 • www.dwu.edu/music

Learning, leadership, faith and service

An Irish Blessing



Personnel

Wesleyan Bells

Erin Desmond, director

Veronica Arevalo-Flores

Hannah Conkling

KayLee Door

Rian Douvier

Elise Foster

Brylee Grof

Ainsley Kurtz

Malorie Mattke

Regan Pilker

Troy Thompson

Julianna Uphoff

Camille Zachrison

The Highlanders

Dr. Clinton Desmond, director

Erin Desmond, piano

Kamryn Boettcher

KayLee Door

Michael Freeman

Elise Foster

Jack King

Malorie Mattke

Rosalie Wehlander

Contess Reyos

Brody Riggs

Trenten Skorepa

Peightan Thomsen

Troy Thompson

Calvin Wallace

Camille Zachrison

Dakota Wesleyan Choir

Dr. Clinton Desmond, director

Erin Desmond, piano

Joel Allen
MaKaylan Bonenberger
Arne Braught
Suzanne Burris
Lexi Burma
Alison Day
Kenna Dickson
Michael Catalano
Sophya Frechette
Sharien Hannigan
Alisha Lockhart

Anne Moege
Grace Moore
Jillian Navratil
Regan Pilker
Courtney Rearick '21
Curt Wehlander '89
Hannah Wehlander '21
Lori Wehlander '92
Loren Wegehaupt

DWU Alumni Choir

Dr. Clinton Desmond, director

Erin Desmond, piano

Davis Anderson '22
Maren Buffington '22
Thanael Certa-Werner '19
Nate Collins '18
Jonathon Freeman '22
Autumn Garr '16
Rachelle Goshorn '17
Melody Howell '12
Liz Kornely '17
Syd Kramer '22
Corbin Kramer '23
Ashton McGee '19
Mike Ratigan '02
Abby Roseland '16
Veronica Stoneall '65
Larry Wegehaupt '75

LyricWood Orchestra

Elizabeth Soladay, director

*Dr. Clinton Desmond,
conductor*

VIOLIN I

Beth Neitzert, Concertmaster

Mary Mairose

VIOLIN II

Emily Gelderman

Jet Shi-Haines

Paityn Juhnke

Harvey Timmer

VIOLA

Elizabeth Soladay, principal

Riley Nupen

CELLO

Marian Casey

BASS

Ly Stoebner

DRUM SET

Brooke Bigge

TRUMPET I

Julia Weeman

TRUMPET II

Robin Dutt

TRUMPET III

Lukas Stoebner

TROMBONE

Ryan Philips

TUBA

Michael Catalano

SNARE

Veronica Aravelo-Flores

Conductors/Directors



DR. CLINTON DESMOND is the director of choral activities, professor of music at Dakota Wesleyan University, and also the chairman for the Ron and Sheilah Gates Department of Music. He received his Bachelor of Music Education degree from Valparaiso University, his Master of Music degree from Illinois State University and his Doctor of Musical Arts from Michigan State University. At DWU, he conducts the Dakota Wesleyan Choir, The Highlanders, LyricWood Orchestra, and also teaches voice, music theory, music history and conducting, and courses in the vocal music education

curriculum. Desmond has taught junior high and high school choir, directed several church music programs, and has sung leading roles in opera and musical theatre. He debuted the role of Doctor Higgins in the 2005 world premiere performance and recording of Nancy Van de Vate's "Where the Cross Is Made" and sang the role of Jean Valjean in Dakota Wesleyan's production of "Les Misérables." He also collaborates with his wife, pianist Erin Desmond, on annual recitals for the DWU campus and the surrounding community. Since joining the DWU faculty in 2010, Desmond has made teaching his passion and has dedicated himself to the growth and development of the music department. Ensembles under his direction embark on yearly concert tours and have been invited to perform for the South Dakota American Choral Directors Association and the South Dakota Music Educators Association. Desmond received the university's Presidential Award for Outstanding Service in 2012 and the prestigious Clarke Award for Teaching Excellence in 2017.

Conductors/Directors



ERIN DESMOND, associate professor of music at Dakota Wesleyan University, teaches voice and music theory, is the university's accompanist and conducts the Wesleyan Bells, the only collegiate handbell choir in the Dakotas. Desmond is also the accompanist for the choirs at Mitchell High School. She received her Bachelor of Music Education from Valparaiso University in Valparaiso, Ind., and her Master of Music degree from Illinois State University. Previously, she taught music at Ethan School in Ethan, general and vocal music at Belvidere South Middle School in Belvidere, Ill., and

vocal music at Willowcreek Middle School in Portage, Ind. She also was the assistant and accompanist for the Southlake Children's Choir from 2005 to 2007. Desmond is a member of the Handbell Musicians of America, National Association of Teachers of Singing and American Choral Directors Association.

Conductors/Directors



ELIZABETH SOLADAY was born and raised in South Dakota and received her B.A. and M.Ed. degrees in music from South Dakota State University. She has also studied in Los Angeles with Myra Kestenbaum, Lawrence Sonderling and Joel Lish, and with Giovanni Lucchi in Cremona, Italy. During her years in Los Angeles, Soladay worked as a freelance violist in various orchestras and recording studios, and her string ensemble was, for a number of years, the “house band” at the Los Angeles County Museum of Art. Soladay has enjoyed a long association with the family of Arnold Schoenberg,

having worked as the Belmont Music Publishers manager for a decade in the late 1990s. Soladay is currently an adjunct professor of keyboard and strings at Dakota Wesleyan University and directs the LyricWood Orchestra. She is active as a freelance violist throughout the state. She is also the organist and director of choirs at St. Martin’s Lutheran Church in Alexandria, S.D., and is active in the South Dakota Chapter of the American Guild of Organists (SDAGO). Soladay has administered the SDAGO’s scholarship academy for many years. She teaches private piano and string lessons, and along with her sister, Mary, owns and operates Con Brio Studio Bow Restoration and Rehairing. Soladay is the violist for the White Spruce Chamber Players.